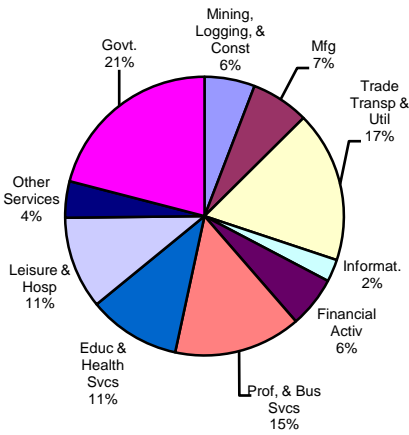


Austin-Round Rock MSA

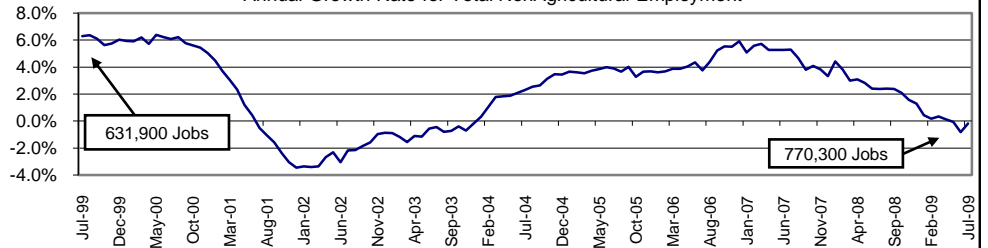
(Bastrop, Caldwell, Hays, Travis, Williamson)

July-2009

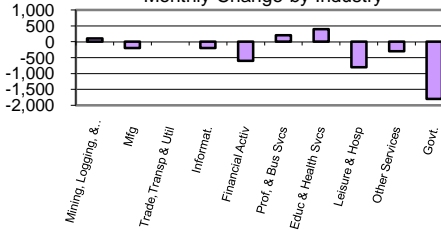
Industry Composition



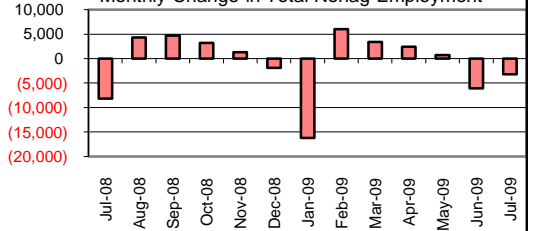
Annual Growth Rate for Total NonAgricultural Employment



Monthly Change by Industry



Monthly Change in Total Nonag Employment



Employment by Industry

	Employment			Monthly Change		Annual Change	
	Jul-2009	Jun-2009	Jul-2008	Actual	%	Actual	%
Total Nonagricultural	770,300	773,500	771,700	-3,200	-0.4%	-1,400	-0.2%
Mining, Logging, & Const	45,000	44,900	48,100	100	0.2%	-3,100	-6.4%
Manufacturing	51,800	52,000	58,700	-200	-0.4%	-6,900	-11.8%
Trade, Transp., & Utilities	135,100	135,100	138,400	0	0.0%	-3,300	-2.4%
Information	20,000	20,200	21,000	-200	-1.0%	-1,000	-4.8%
Financial Activities	45,600	46,200	45,000	-600	-1.3%	600	1.3%
Profes., & Business Svcs	113,700	113,500	112,400	200	0.2%	1,300	1.2%
Education & Health Svcs	82,500	82,100	79,400	400	0.5%	3,100	3.9%
Leisure & Hospitality	82,600	83,400	81,500	-800	-1.0%	1,100	1.4%
Other Services	32,500	32,800	31,100	-300	-0.9%	1,400	4.5%
Government	161,500	163,300	156,100	-1,800	-1.1%	5,400	3.5%

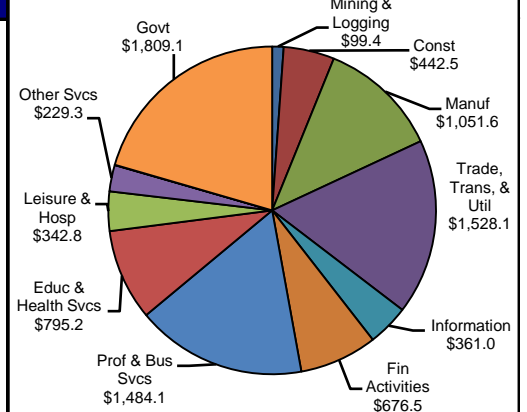
Size Class of Industries as of March 2009

Size Class	Employees Per Firm	Number of Firms	Employment in Size Class	% of Total Employment
9	1000+	72	230825	30.9%
8	500-999	97	66242	8.9%
7	250-499	209	69736	9.3%
6	100-249	682	103784	13.9%
5	50-99	1093	75948	10.2%
4	20-49	2769	83430	11.2%
3	10-19	3660	49532	6.6%
2	5-9	5430	35794	4.8%
1	1-4	16536	32606	4.4%
0	0	3938	0	0.0%
TOTAL		34486	747897	100.0%

Comments for July 2009

Total Nonagricultural Employment in the Austin-Round Rock MSA decreased by 3,200 jobs in July. Total Government employment was responsible for the majority of the decrease. This was a seasonal employment decline due to the summer break for universities and local school districts. Mining, Logging, and Construction employment grew by 100 jobs in July. Retail Trade employment increased slightly over the month. Employment in Education and Health Services grew by 400 jobs in July. Over the year, this industry increased by 3,100 jobs or 3.9 percent. Leisure and Hospitality employment decreased by 800 jobs in July, but gained 1,100 jobs or 1.4 percent since July 2008. The annual growth rate for the Austin-Round Rock MSA was -0.2 percent in July, a loss of 1,400 positions since July 2008.

1st Quarter Wages by Industry (in millions)



Unemployment Information (all estimates are in thousands)

	Austin-Round Rock MSA				Texas (Actual)				United States (Actual)			
	C.L.F.	Emp.	Unemp.	% Rate	C.L.F.	Emp.	Unemp.	% Rate	C.L.F.	Emp.	Unemp.	% Rate
Jul-2009	902.6	836.6	66.0	7.3	12,136.5	11,137.7	998.8	8.2	156,255.0	141,055.0	15,201.0	9.7
Jun-2009	895.0	831.2	63.8	7.1	12,074.9	11,110.3	964.6	8.0	155,921.0	140,826.0	15,095.0	9.7
Jul-2008	870.0	829.4	40.6	4.7	11,799.1	11,179.3	619.8	5.3	156,300.0	146,867.0	9,433.0	6.0